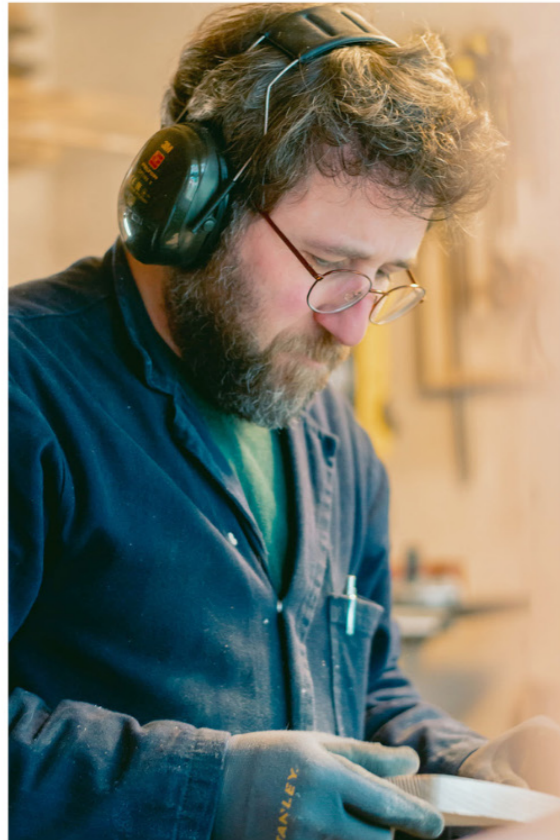


# Catalogue

WINTER/AUTUMN 2022





## Everyday a Better World

Kaplum is the designers-duo Anna van Gerve and Alper Demir, both graduated in Fine Arts at the Gerrit Rietveld Academy in Amsterdam. The way children experience the world - full of color, adventure and imagination - is the basis of our designs.

### Carefully Handmade by Us

All of our products are designed and handcrafted by us at our home studios in Alkmaar, the Netherlands.

### The Adventure of Play

We believe it is essential for kids to learn through play. Play is one of the most important ways in which young children gain knowledge and skills. Our ideal is to contribute to a better future by raising an awareness in children from a very early age on about the world around them. We inspire them to stand up for our planet.

### The Joy of Imagination

We have a basic human need to express imagination, curiosity and creativity, which are key resources in a knowledge-driven world. For us it is vital to allow the imagination of children to flourish. In our designs we use simple shapes and colours, leaving space for them to invent their own universe. Our inspiration comes from abstract and minimalist art. By adding actual stories to our toys, we motivate parents to communicate with their children and open up a world of endless possibilities.

### 0% Plastic, 100 % Natural

Because we don't want to contribute to the plastic problem in any way, all of our toys, packaging and promotion materials are completely plastic free. We use GOTS certified organic cotton plush, organic cotton thread, a sheep wool stuffing, environmentally friendly FSC certified wood, paints and finishes and recycled cardboard boxes.

### Design for All Ages

We believe that our toys are not only for children. They can be beautiful objects to add joy to everyday life. We aim for them to last for generations.

All of our toys are in compliance with the European standards for safety on toys (EN-71.3) and bear the CE mark, which confirms they passed all tests (a.o. flammability tests, chemical tests and mechanical tests).





## 0% PLASTIC, 100% NATURAL

Every year about over 5 million tons of plastic ends up in our oceans. This plastic does not dissolve but disintegrates into smaller pieces, releasing toxins in the process. UNESCO estimates that over 100.000 sea mammals die each year as a consequence of the pollution of our oceans with plastic. In addition, there is strong evidence that plastic pollution also poses a threat for

human health. It is already known that many additives in plastic are considered extremely harmful, especially for still developing children. However, the full scope of the problem is still poorly understood. Because we don't want to contribute to the plastic problem in any way, all of our toys, packaging and promotion materials are completely plastic free.

Our soft toys are made with GOTS\* certified organic cotton plush, a linen/cotton mix and organic cotton thread. We fill them with and Oeko-Tex Standard-100\*\* certified Texel sheep wool stuffing. Texel is a Dutch island, and close to our hometown: Alkmaar. Besides being soft and comforting, wool is hypoallergenic, and wool-stuffed toys are therefore ideal for all children, also those with asthma, eczema or allergies.

For our wooden toys we use environmentally friendly natural paints and finishes and FSC\*\*\* certified wood, paints and finishes.

Of course our packaging and printed material are also all environmentally friendly; recycled cardboard boxes, FSC certified paper tape and paper.

\* The Global Organic Textile Standard (GOTS) is the worldwide leading textile processing standard for organic fibers, including ecological and social criteria, backed up by independent certification of the entire textile supply chain.

\*\* Articles carrying the STANDARD 100 Oeko-Tex label have been tested for harmful substances and have been demonstrated to be harmless in human ecological terms.

\*\*\* The FSC certification is considered the gold standard designation for wood harvested from forests that are responsibly managed, socially beneficial, environmentally conscious, and economically viable.



## SAVE THE WHALE

Every year over eight million tons of plastic ends up in our oceans. UNESCO estimates that because of this over hundred thousand sea mammals die each year. Whales are among the victims. Ingesting plastic gives them a false sense of being full. This causes them to lose appetite, leading to starvation and death. If we continue unabated, there will be more plastic than fish in the ocean by 2050.

Using less plastic is one of the major ways in which we can combat this crisis. That's why Kaplum developed a 100% plastic-free soft toy whale. With this project we sponsor the Plastic Soup Foundation, a leading advocacy group to tackle plastic pollution. We firmly believe in their mission to have 'no plastic in our water or our bodies' and we hope you do too!

**By buying a handmade 100% plastic-free Kaplum whale you donate €1-€4 (depending on the size: S €1, M €2, L €4) to the Plastic Soup Foundation and support their campaigns and education program.**

**LET'S SAVE THE WHALE LET'S SAVE THE PLANET**

For more information go to: [www.plasticsoupfoundation.org/en/](http://www.plasticsoupfoundation.org/en/)





Sperm Whale (large)  
linen/cotton, sheep wool filling  
L 80 cm, H 25 cm  
ST-WH-SPER-XL



Right Whale (large)  
linen/cotton, sheep wool filling  
L 87 cm, H 30 cm  
ST-WH-RIGH-XL



Blue Whale (large)  
linen/cotton, sheep wool filling  
HL 83 cm, H 30 cm  
ST-WH-BLUE-XL



Sperm Whale (small)  
linen/cotton, sheep wool filling  
L 23 cm, H 8 cm  
ST-WH-SPER-S



Right Whale (small)  
linen/cotton, sheep wool filling  
L 26 cm, H 10 cm  
ST-WH-RIGH-S



Blue Whale (small)  
linen/cotton, sheep wool filling  
L 24 cm, H 10 cm  
ST-WH-BLUE-S

Sperm Whale (medium)  
linen/cotton, sheep wool filling  
L 36 cm, H 12 cm  
ST-WH-SPER-M



Blue Whale (medium)  
linen/cotton, sheep wool filling  
L 36 cm, H 14 cm  
ST-WH-BLUE-M



Right Whale (medium)  
linen/cotton, sheep wool filling  
L 36 cm, H 14 cm  
ST-WH-RIGH-M





Screenprint Tynan the True Whale (A2)  
handprinted on  
L cm, H cm  
SS-WHA-TYN



Screenprint Myrle the Blue Whale (A2)  
handprinted on  
L cm, H cm  
SS-WHA-MYR



Screenprint Holger the Sperm Whale (A2)  
handprinted on  
L cm, H cm  
SS-WHA-HOL



Monkey  
GOTS cotton plush, linen/cotton,  
sheep wool filling  
H 20 cm, W 22 cm  
ST-FA-MONK-M



Bear  
GOTS cotton plush, linen/cotton,  
sheep wool filling  
H 20 cm, W 22 cm  
ST-FA-BEAR-M



Raccoon  
GOTS cotton plush, linen/cotton,  
sheep wool filling  
H 20 cm, W 22 cm  
ST-FA-RAC-M





Monkey  
GOTS cotton plush, linen/cotton,  
sheep wool filling  
H 35 cm, W 38 cm  
ST-FA-MONK-L



Bear  
GOTS cotton plush, linen/cotton,  
sheep wool filling  
H 35 cm, W 38 cm  
ST-FA-BEAR-L

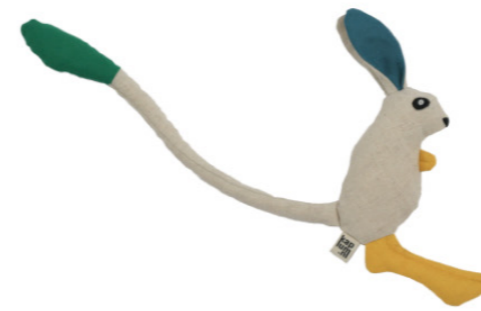


Raccoon  
GOTS cotton plush, linen/cotton,  
sheep wool filling  
H 35 cm, W 38 cm  
ST-FA-RAC-L





Meerkat  
linen/cotton, sheep wool filling  
H 24 cm, W 8 cm  
ST-FA-MEER



Jerboa  
linen/cotton, sheep wool filling  
H 23 cm, W 39 cm  
ST-FA-JERB



Dromedary  
linen/cotton, sheep wool filling  
H 26 cm, W 21 cm  
ST-FA-DROM





Crocodile  
Ashwood, carnauba wax  
L 21, H 9, W 2.4 cm  
WT-TA-CRO



Hippo (down)  
Ashwood, carnauba wax  
L 16, H 10, W 2.4 cm  
WT-TA-HIP-D



Giraffe  
Ashwood, carnauba wax  
L 10, H 17.5, W 2.4 cm  
WT-TA-GIR



Hippo (up)  
Ashwood, carnauba wax  
L 16, H 10, W 2.4 cm  
WT-TA-HIP-U



Tiger  
Ashwood, carnauba wax  
L 11, H 14, W 2.4 cm  
WT-TA-TIG



Seal  
Ashwood, carnauba wax  
L 17, H 10.5, W 2.4 cm  
WT-PA-SEAL



Polar Bear  
Ashwood, carnauba wax  
L 17, H 10.5, W 2.4 cm  
WT-PA-POL



Whale  
Ashwood, carnauba wax  
L 21, H 7, W 2.4 cm  
WT-PA-WHA



## LOCKDOWN ANIMALS

During the strange times of Covid-19 lockdown, we started working on a new project: Lockdown animals. Amongst all the sad and disturbing news we came across one small beautiful thing: animals started to reclaim the cities. Swans in the canals of Venice, ducks in the fountains of Rome, foxes in Berlin gardens and raccoons in Central Park. And there were more: mountain goats in Llandudno (Wales), monkeys in Lopburi (Thailand), wild boars in Barcelona, coyotes in San Fransisco, hedgehogs on the roads in the UK, penguins in Cape Town. For now we had time to design four of these lockdown animals, but it is an ongoing project.



Swan  
linen/cotton, sheep wool filling  
H 19 cm, L 22, W 7 cm  
ST-LA-SWAN



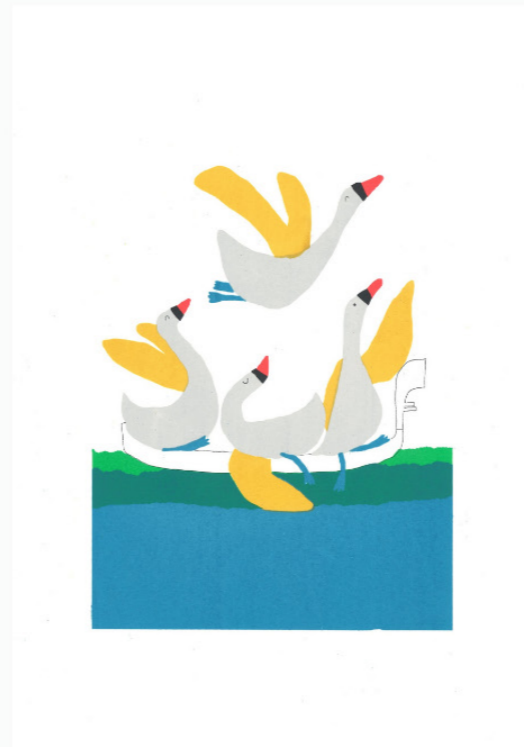
Fox  
linen/cotton, sheep wool filling  
H 16 cm, L 24, W 8 cm  
ST-LA-FOX



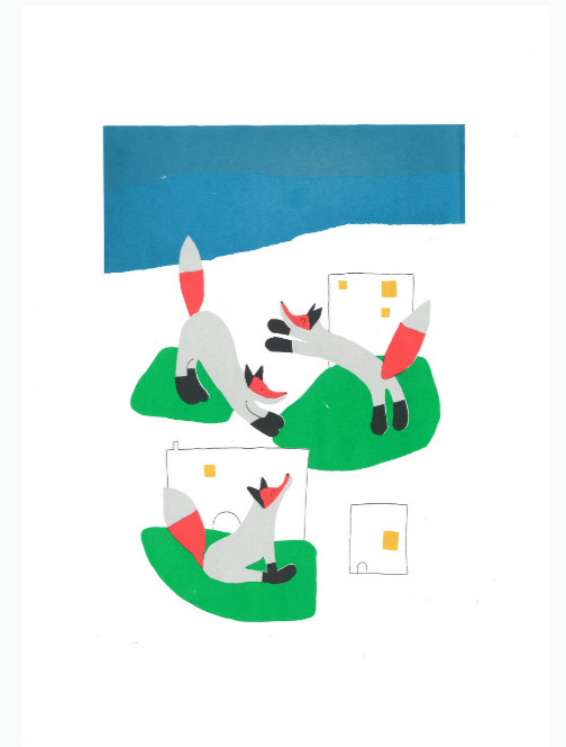
Raccoon  
linen/cotton, sheep wool filling  
H 17 cm, L 26, W 12 cm  
ST-LA-RAC



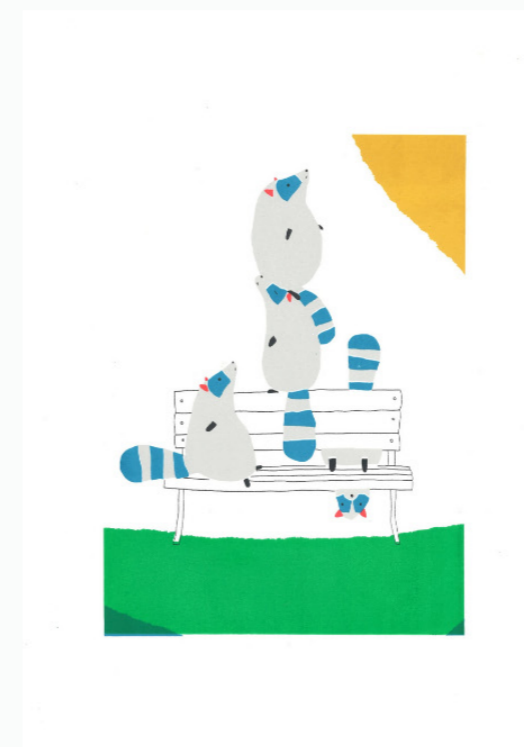
Duck  
linen/cotton, sheep wool filling  
H 14 cm, L 18, W 7 cm  
ST-LA-DUCK



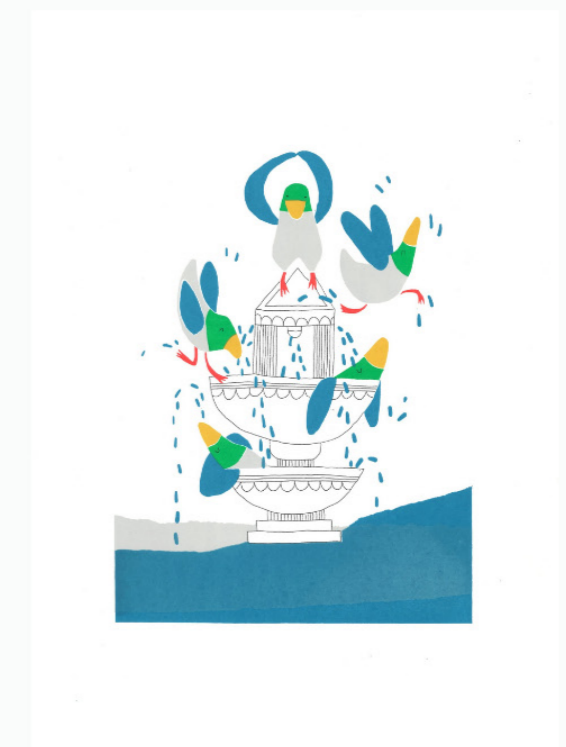
Screenprint Swans in Venice (A3)  
handprinted on 300g biotop paper  
H 42 cm, L 29.7  
SS-LOCK-SWAN



Screenprint Foxes in Berlin (A3)  
handprinted on 300g biotop paper  
H 42 cm, L 29.7  
SS-LOCK-FOX



Screenprint Raccoons in Central Park (A3)  
handprinted on 300g biotop paper  
H 42 cm, L 29.7  
SS-LOCK-RACC



Screenprint Ducks in Rome (A3)  
handprinted on 300g biotop paper  
H 42 cm, L 29.7  
SS-LOCK-DUCK



Curly Blue Whale (medium)  
organic cotton plush, sheep wool filling  
L 27 cm, H 10 cm  
ST-WHA-BLUE-CURL-M



Velvet Blue Whale (medium)  
organic cotton velvet, sheep wool filling  
L 27 cm, H 10 cm  
ST-WHA-BLUE-VEL-M



Curly Blue Whale (large)  
organic cotton plush, sheep wool filling  
L 55 cm, H 25 cm  
ST-WHA-BLUE-CURL-L



Velvet Blue Whale (medium)  
organic cotton velvet, sheep wool filling  
L 55 cm, H 25 cm  
ST-WHA-BLUE-VEL-L

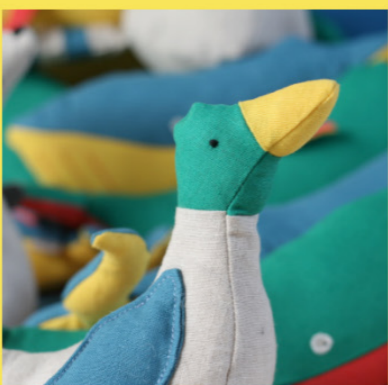
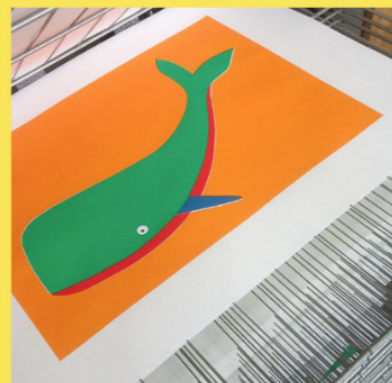


Velvet Whale Yellow (small)  
organic cotton velvet, sheep wool filling  
L 19 cm, H 8 cm  
ST-WHA-YEL-VEL-S



Velvet Blue Whale (small)  
organic cotton velvet, sheep wool filling  
L 19 cm, H 8 cm  
ST-WHA-BLUE-VEL-S

follow us on Instagram  
@kaplum.nl



0031 6 10850749  
info@kaplum.nl

Westfalenstraat 19  
1827 AV Alkmaar - The Netherlands

[www.kaplum.nl](http://www.kaplum.nl)



**Credits**

Coverphoto by Annegien van Doorn  
Photography by Annegien van Doorn, KOD  
film and Kaplum

All rights reserved to Kaplum  
With reservations for printing mistakes, color  
differences and change in product range

